



**The New Cultured Class**



CREATE  
A SUAVE SOCIAL  
SIGNATURE





**LIVE  
FOURTH  
DIMENSION  
OF SPACE**



BE ICONIC  
AT A LEVEL  
RIGHT UP  
THERE







THE NEW  
CULTURED CLASS

# Argus

Argus is a universe with a comprehensive outlook for life. Where each tower compliments the collective project in its own unique way.

The name Argus is inspired by the greek mythology where Argus is the son of Zeus, the king of Gods, and also the ruler of Argos. If we go by the popular belief, Argus is also known to have 100 eyes that signifies a vision beyond the obvious.

The tower simply personifies the existence of Argus and translates it into an architectural perspective. In a way Argus is the harbinger of change in the lifestyle sphere of Jaipur.

It is "The New Cultured Class" a very few belong to.



## LEAVE A MARK IN EVERY STRIDE



### RECIPERE

Class starts much before it becomes a matter of experience. With every step at Argus, there is something that wraps the essence of a wishful living into the patterns of a truly evolved life. One can call it grand with the elements of lavishness. It's a mark of dignified welcome and also a defining signature of the individuality that rightfully deserves it. In a way, Argus is a remarkable life with its magnificent presence for all the good reasons a life can have.



LIFT LOBBY



LIVE THE  
GLORIFIED  
INDIVIDUALITY



MASTER BEDROOM

WRAP DESIRES  
WITH  
TIMELESS  
DISTINCTIVENESS



KIDS' BEDROOM

With every geometrically defined world there lies a domain that luxuriously belong to individuals with a unique palate for life. Bedrooms at Argus are typical symbols of being special in a world within a world. Here life spreads its wings to attain the heights of lifestyle excellence. Every bit of personal spaces at Argus are designed to enhance the ambience and enrich the flavour of personalised luxury experience.



DINING ROOM



Flavours of life go beyond the periphery of taste buds. They enrich the joy of sharing and bind individuals with their near and dear ones. Every typical day at Argus cooks new stories of being together and living together. The dining and kitchen spaces play a perfect host at Argus and turn small joys into an occasion of celebration. Well-crafted luxurious amenities and a touch of individual taste make it an ideal companion for those relishing moments.



KITCHEN

**HAVE  
A ROLICKING FEAST  
WITH LIFE**





#### LIVING ROOM

When desires come alive in the form of materialistic pinnacle, Argus happens. Right from distinctively designed living spaces to vibrantly mood enhancing interior, living area at Argus is a place of colourful grandeur. More than just a living area, it's an area that makes personal moments rich and classy. A perfect fusion of comfort, elegance and style, living area at Argus separates rest of the world from a truly personalised kingdom. A place to live with passion and make life worth living in almost every sense.



#### GRAND BALCONY

OPEN A NEW WINDOW  
TO THE WORLD





## FIND LIFE IN EVERY PAUSE

Life is a subset of movement but a pause defines it with more authenticity. Every time life slows down, human existence shapes most precious experiences. Points to ponder come out of those quiet and slow moments only. Turn over and see how life looks in such timeless occasions. Yes, every bit of it is a true reflection of close-to-heart aspirations.





THE OASIS (INFINITY POOL ON THE 9th FLOOR)

## LIVE IN THE FLOW OF LEISURE

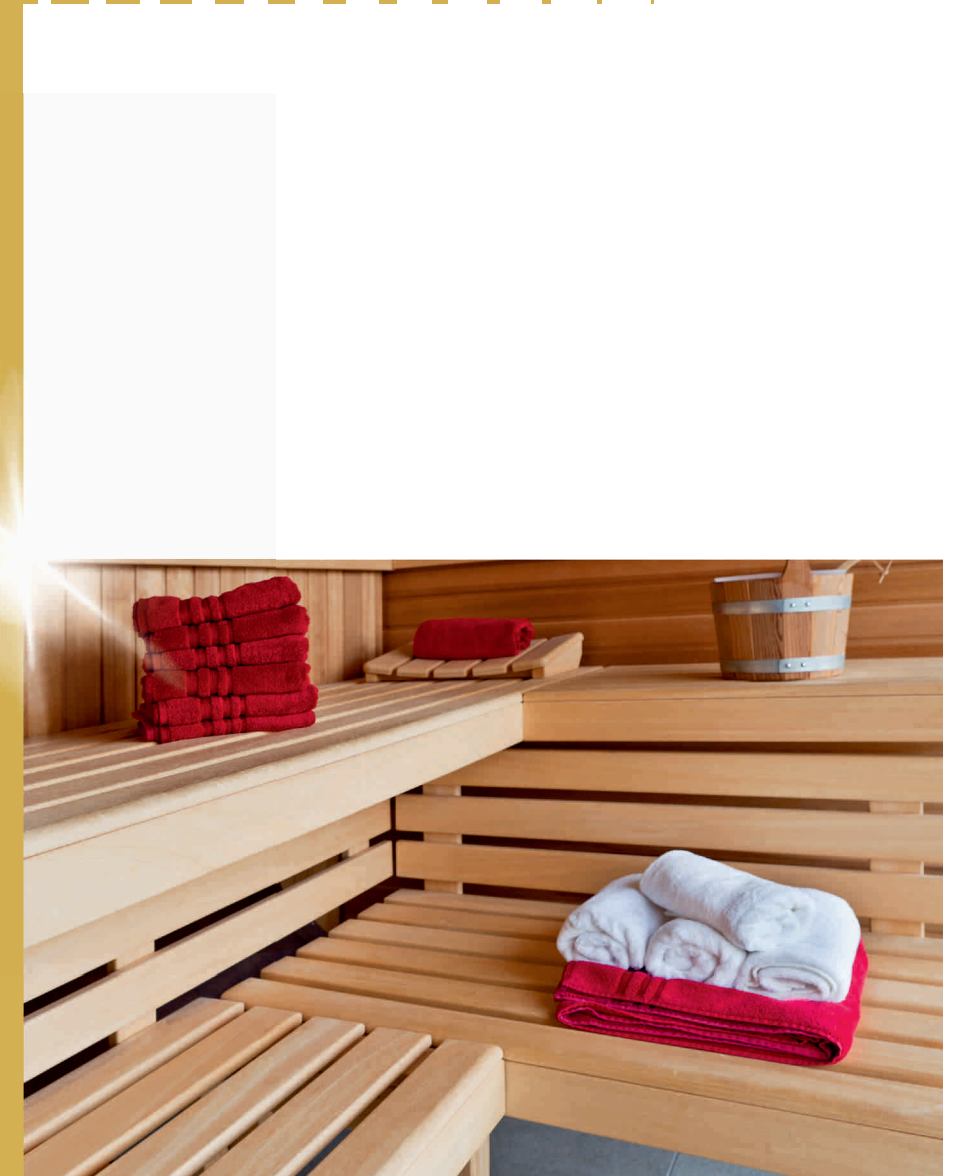
Argus hosts an infinity swimming pool on the 9th floor to add the most exclusive ingredients of a happening lifestyle. Right from leisure to recreation and relaxation to fitness, it creates a new world where life fits in the patterns of active fullness. Let the life come out of the pre defined notions and explore new avenues of a truly flowing life. It's not only about diving to chill but it's also about reflecting life in the transparent frame of desires.



MAKE LIFE A  
WORLD FREE OCCASION



GYMNASIUM



SAUNA

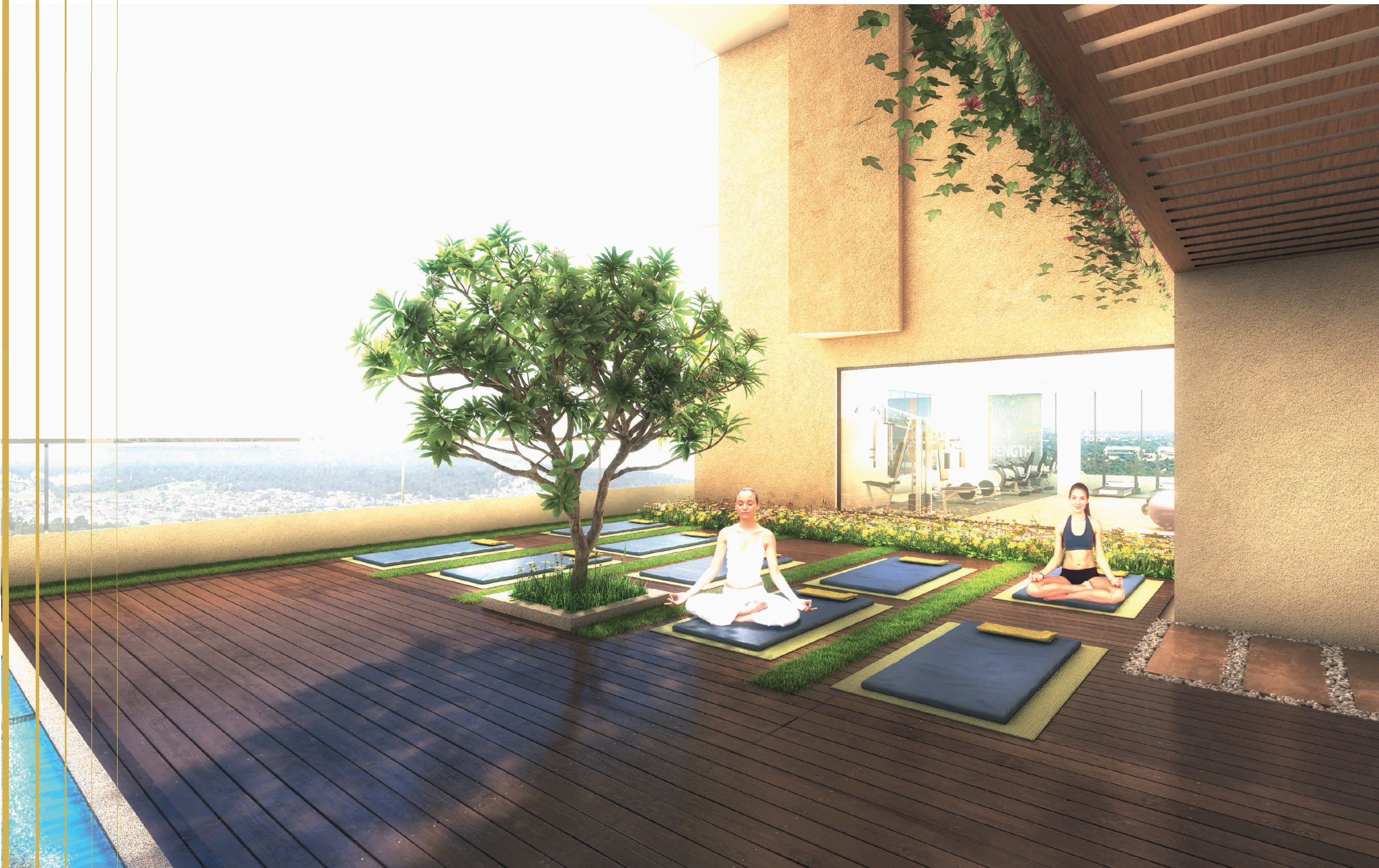
For the bounty of health, Argus has facilities like a well-equipped gymnasium and sauna where dwellers can stretch out beyond the limits of busy life schedule. Imagine after a series of hectic hours, there is a place where life has all the reasons to unwind and live its true self.



Every 3rd floor in Argus houses a dedicated extra space to add a new angle to the idea of socializing. For entertainment, there is a well-appointed mini theatre in the township campus which further adds value to overall leisure experience. Perhaps, it's a one-of-its-kind entertainment zone where residential living takes a big leap to reach to the heights of an exciting life.



MINI THEATRE



NIRVANA DECK

**INHABIT  
IN A DEFINED  
SOCIAL SPHERE**



## BE THERE TO MARK AN ILLUSTRIOUS PRESENCE



CAFETERIA

There are times when life needs spaces and time to quench the thirst of one's intellectual self. That's why Argus has a cafeteria to give both zing and resources to feed the creative side of the brain. It's for acquiring knowledge and sharing it with like-minded acquaintances. There is definitely something enriching about having friends around and taking a sip of a steaming coffee.



BUSINESS CENTRE (Proposed)



# THE LOCATION WITH A POSITION



Map not to scale, purely indicativ



## DISTANCES

- Seedling School 6.5 KM
- SMS School 6.5 KM
- Durlabhji Hospital 5.0 KM
- Vidhan Sabha 4.3 KM
- Jawahar Kala Kendra 3.1 KM
- Vidya Ashram 1.9 KM
- Fortis Hospital 2.3 KM
- Marriott Hotel 2.4 KM
- Rukmini Devi Birla School 3.2 KM
- World Trade Park 3.7 KM
- Entertainment Paradise 4.1 KM
- Airport 4.4 KM

## DISTANCES

- Khandaka Hospital 4-6 Mins.
- Big Bazaar 6-8 Mins.
- Jaipuria Hospital 10-12 Mins.

Like its imposing persona, Argus is located at a place of both strategic and geographical importance. For all the comfort, Argus is properly connected to the places of personal and professional importance and for the convenience, it brings the best of surrounding world to its residents.

Argus is a world with everything good connected to it without making any noise.



# STATE-OF-THE-ART ARCHITECTURE ALONG WITH AERODYNAMICS CIRCULATION

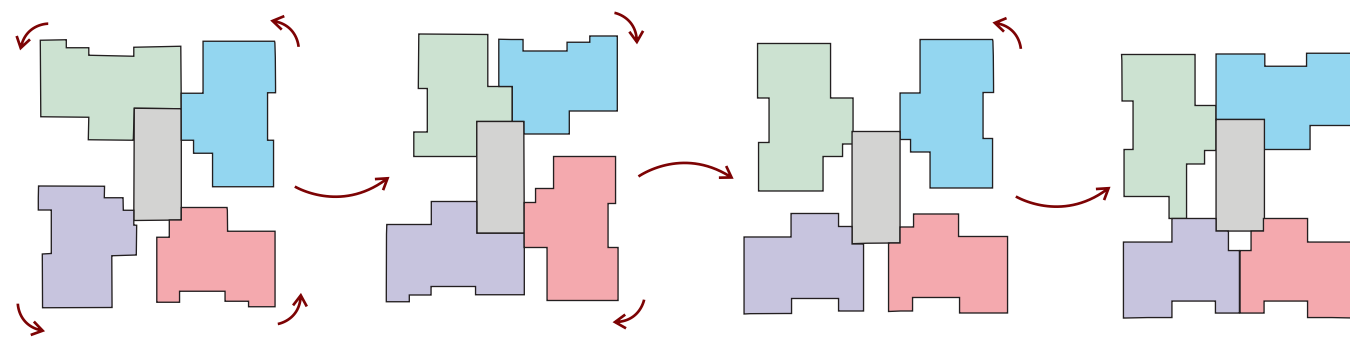
# A NEW PERSPECTIVE FOR FUTURE IN THE MAKING

Jaipur is known for its heritage architecture that presents a perfect fusion of science and aesthetics. With the passage of time, Jaipur has crossed many milestones of architecture revolution. Argus at is one such masterpiece that takes Pink City's architectural excellence to a new high through its unique aerodynamic architecture. It is a definition of what Jaipur has ever seen. Here is a multi-sectional representation of this architectural marvel.

The ground view of this building showcases an impressive palatial architecture. It has well-connected winding balconies till the top ensuring the systematic flow of air. Every home at Argus is poised to give you shaded ventilation. Come, experience state-of-the-art architecture along with aerodynamic circulation.

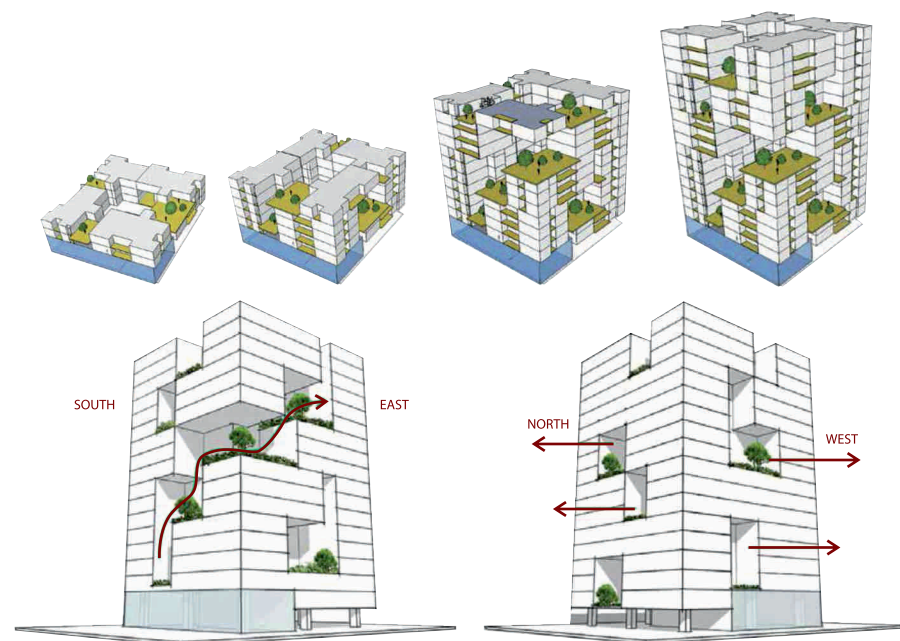
Argus is a unique project in more than one ways. The idea is to develop responsibly by being positive to both society and environment. Think tank at Argus always strives hard to be at par with the state-of-the-art practices from across the globe.

Being a one-of-its kind project, Argus is setting new benchmarks of best construction practices and innovation. It's a journey of excellence aiming at creating a future that every progressive Indian truly deserves.

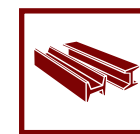


As visible here in the cross sectional view of Argus, the building alternatively opens out into different directions thereby allowing constant flow all around the building too. Every single unit is ensured constant supply of fresh air and shade. If all this wasn't enough, imagine a concept where you are safe from the scorching summer heat and all season pollution, thanks to the design of your building.

When you live here, your field of vision isn't restricted. The dual options range from North & East views, South & West views, North & West views. Truly, a modern masterpiece. The spectacular aerial view of every home has multiple patches of Greenery.



USE OF 6.5 KG IRON RODS PER SQ. FT. INSTEAD OF COMMONLY USED 4 KG IRON RODS PER SQ. FT. FOR EXTRA BUILDING STRENGTH



USE OF M-35 COLUMN BEAMS INSTEAD OF COMMONLY USED M-25 BEAMS



USE OF ACC BLOCKS MAKE BUILDING HEAT RESISTANT AND ALSO LESSENS BUILDING DEADWEIGHT



DOUBLE GLAZED GLASS TO REDUCE ENERGY CONSUMPTION



3 SIDE OPEN FLATS TO ENSURE OPTIMUM ENERGY LEVELS AND PROPER LIGHT, AIR FLOW



USE OF ACC BLOCKS WITH GYPSUM PLASTER TO SAVE APPROX. 90,000 LITERS OF WATER EVERYDAY



3 TIER PROFESSIONAL SECURITY FOR A COMPLETELY SAFE AND SECURE LIVING



TRIPLE HEIGHT  
TERRACE  
BUNGALOWS  
TO CELEBRATE  
THE LARGENESS  
OF LIFE





# TYPICAL FLOOR PLAN



FLAT NO. 301/401/501

FLAT NO. 302/402/502



FLAT NO. 304/404/504

FLAT NO. 303/403/503

# UNIT PLAN 4 BHK



FLAT NO	301/401/501	302/402/502	303/403/503	304/404/504
CARPET AREA	2718.94 SQ. FT.	2691.83 SQ. FT.	2330.08 SQ. FT.	2326.42 SQ. FT.
BUILT-UP AREA (WITH BALCONY)	3347.25 SQ. FT.	3313.34 SQ. FT.	2960.50 SQ. FT.	2962.76 SQ. FT.
SUPER BUILT-UP AREA	4395.94 SQ. FT.	4351.41 SQ. FT.	3888.03 SQ. FT.	3891.00 SQ. FT.

FLAT NO	CARPET AREA	BUILT-UP AREA	SUPER BUILT-UP AREA
104	2571.64 SQ. FT.	3247.46 SQ. FT.	4264.89 SQ. FT.



# UNIT PLAN

## 4 BHK



FLAT NO	CARPET AREA	BUILT-UP AREA	SUPER BUILT-UP AREA
303	2330.08 SQ. FT.	2960.50 SQ. FT.	3888.03 SQ. FT.

# UNIT PLAN

## 5 BHK



FLAT NO	CARPET AREA	BUILT-UP AREA	SUPER BUILT-UP AREA
302	2691.83 SQ. FT.	3313.34 SQ. FT.	4351.41 SQ. FT.



# 9<sup>TH</sup> FLOOR PLAN-CLUB



FLAT NO. 904

FLAT NO. 903



# 12<sup>TH</sup> FLOOR PLAN (CUSTOMISABLE)



FLAT NO	1201
CARPET AREA	2924.68 SQ. FT.
BUILT-UP AREA	4175.36 SQ. FT.
SUPER BUILT-UP AREA	5483.50 SQ. FT.

FLAT NO	1202
CARPET AREA	2778.23 SQ. FT.
BUILT-UP AREA	3571.52 SQ. FT.
SUPER BUILT-UP AREA	4690.47 SQ. FT.

## LIVE A TAILORMADE LIFE



Argus offers its dwellers the freedom to customise flat layout with options ranging between 3800 sq. ft. to 12000 sq. ft. (4 BHK onwards). The concept offers buyers an additional advantage to try their hands in designing their flats as per their liking and requirements. Be it horizontal, vertical, with terrace or without terrace, now buyers have great choices to make.



# UNIT PLAN

## DUPLEX (LOWER LEVEL)



# UNIT PLAN

## DUPLEX (UPPER LEVEL)



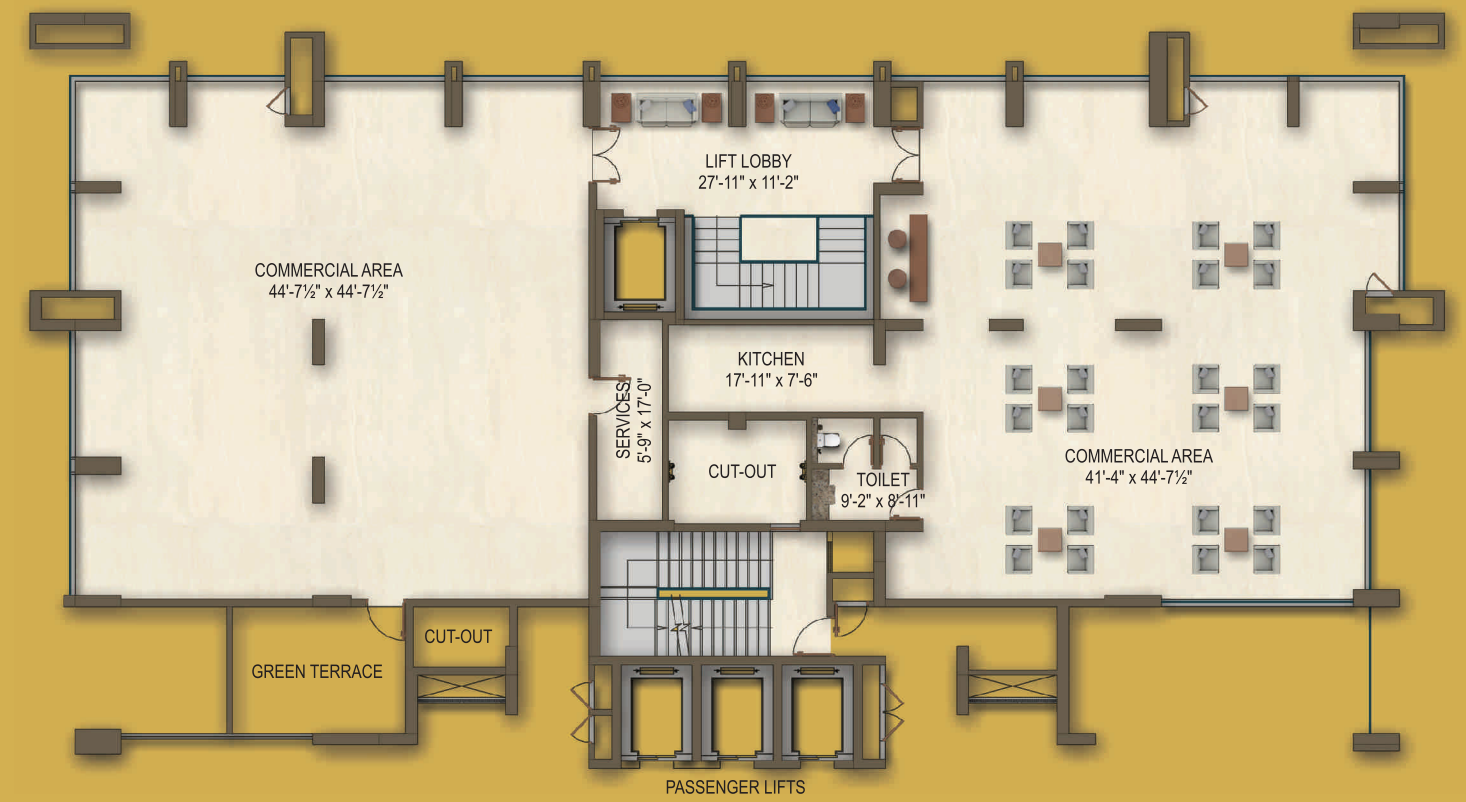
FLAT NO	CARPET AREA	BUILT-UP AREA	SUPER BUILT-UP AREA
1701	2682.15 SQ. FT.	3297.08 SQ. FT.	10154.88 SQ. FT.
1801	2682.15 SQ. FT.	3297.08 SQ. FT.	(Common)



# TERRACE PLAN



# 1<sup>ST</sup> FLOOR PLAN COMMERCIAL



FLAT NO. 104

FLAT NO. 103







# Argus

C.R. Dass Farm, Tonk Road, Gopalpura Mod, Mahaveer Nagar, Jaipur-302018  
M : +91 93111 19191, +91 99999 79561

---

**RERA REGISTRATION NO. (ARGUS) RAJ/P/2017/149**

" Images/Facilities shown are only representational and informative. Information, images and visuals are only indicative of the envisaged developments and the same are subject to change in actual as per approvals. The views shown in the pictures may vary over period of time and does not guarantee the same. All intending purchaser/s are bound to inspect all plans and approvals and visit project site and apprise themselves of all plans and approvals and other relevant information obtained from time to time from respective authority. The promoter holds no responsibility for its accuracy and shall not be liable to any intending purchaser or anyone for the changes/alterations/improvements so made".